

## **Annexure C4: Site Information PR10417763 Design, Supply, Delivery, Installation, Commissioning of Power Quality meters at Booster stations.**

### **Attention bidder-**

\*Successful supplier must submit a complete Safety File for Induction at Zwartkopjes Risk Department within 10 days of receiving official order number, for approval.

\*Successful supplier must submit the Quality Control Plan as well as the programme within 2 weeks after the approval of the scope of work.

\* Progress meetings will be required for duration of the project.

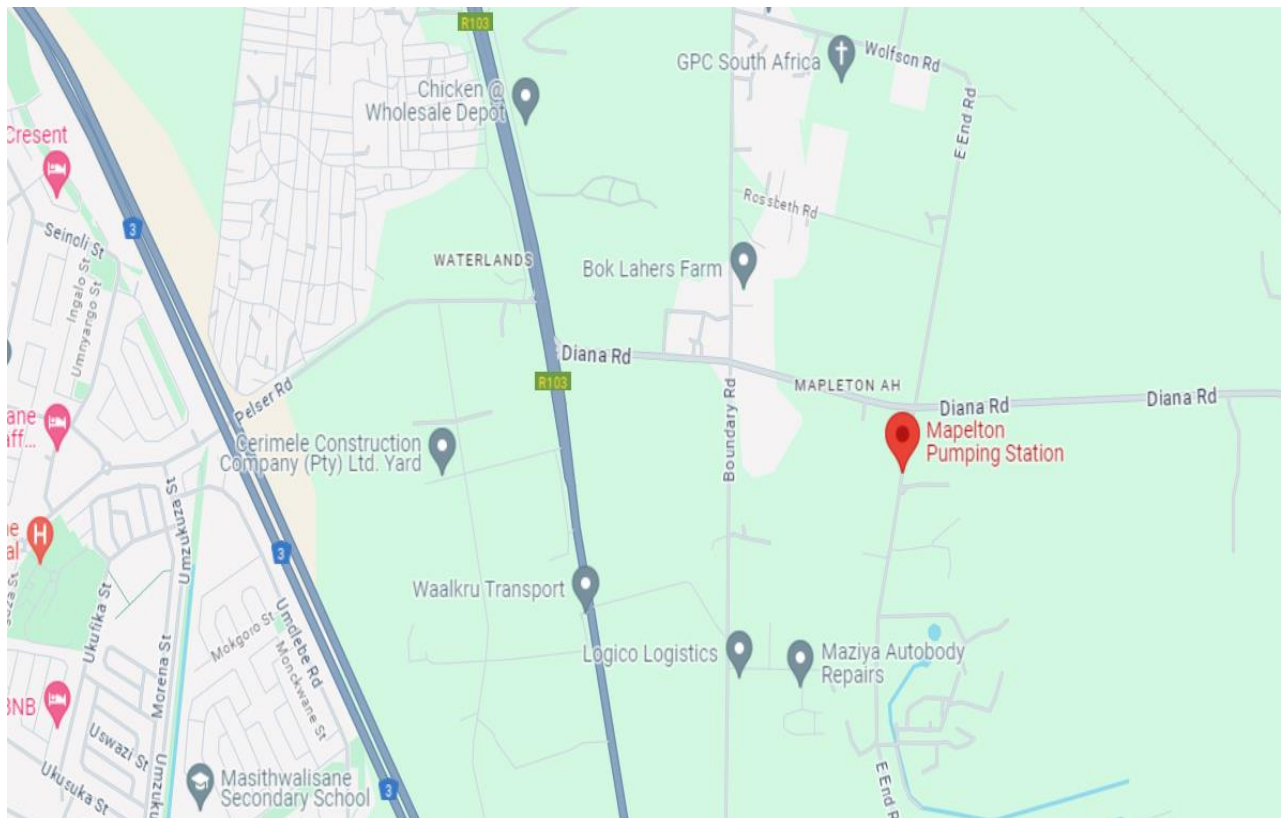
\*Suppliers make use of their own equipment; no Rand Water equipment will be made available

### **Annexure C4: Site Information**

#### **SITE INFORMATION**

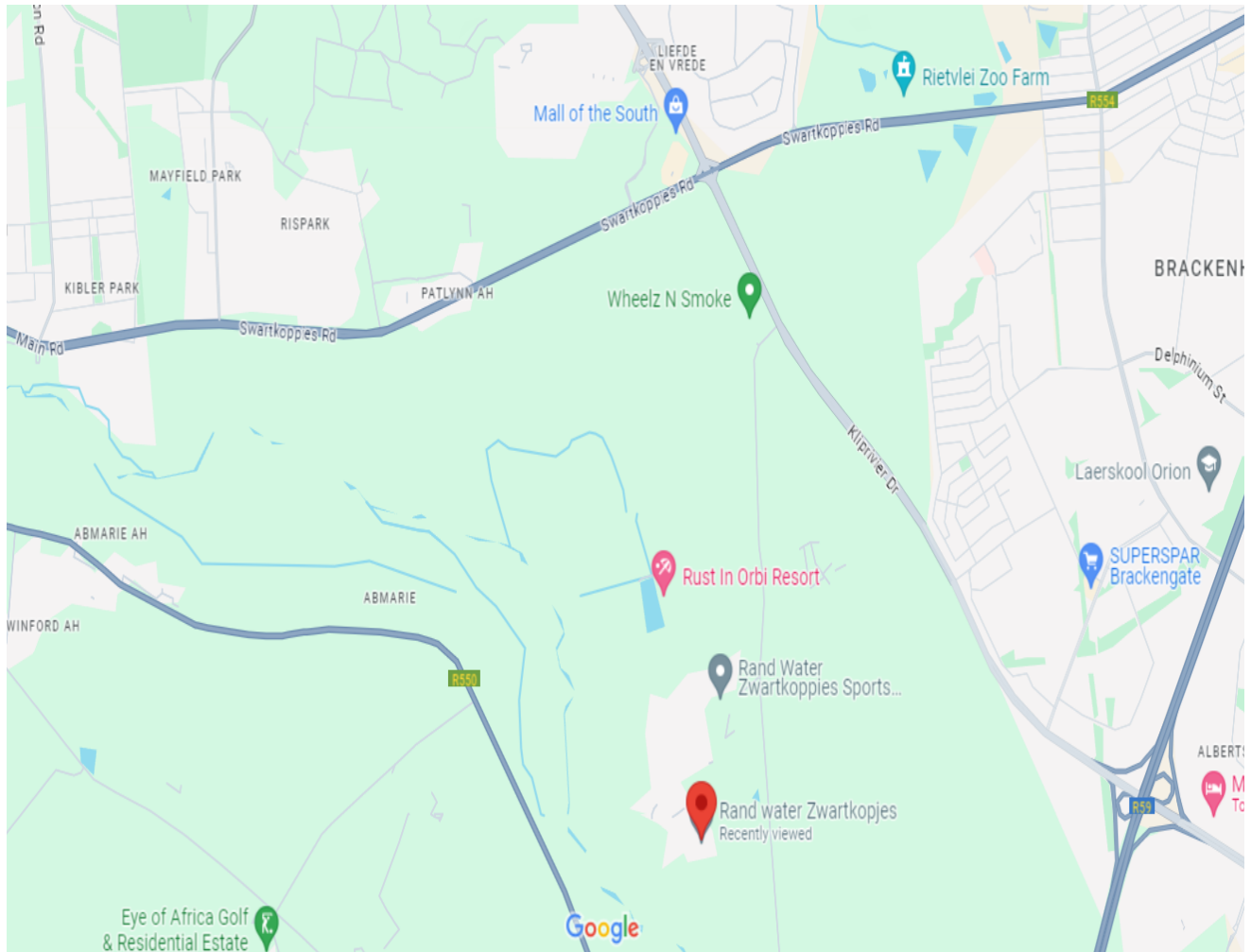
##### **1. SITE LOCATION- Mapleton Pumping station.**

The Site of the work is situated at GPS coordinates **26°35'75.9"S; 28°25'11.9"E** in **Mapleton**. This site is located on the East of Johannesburg not far from **Vosloorus township**.



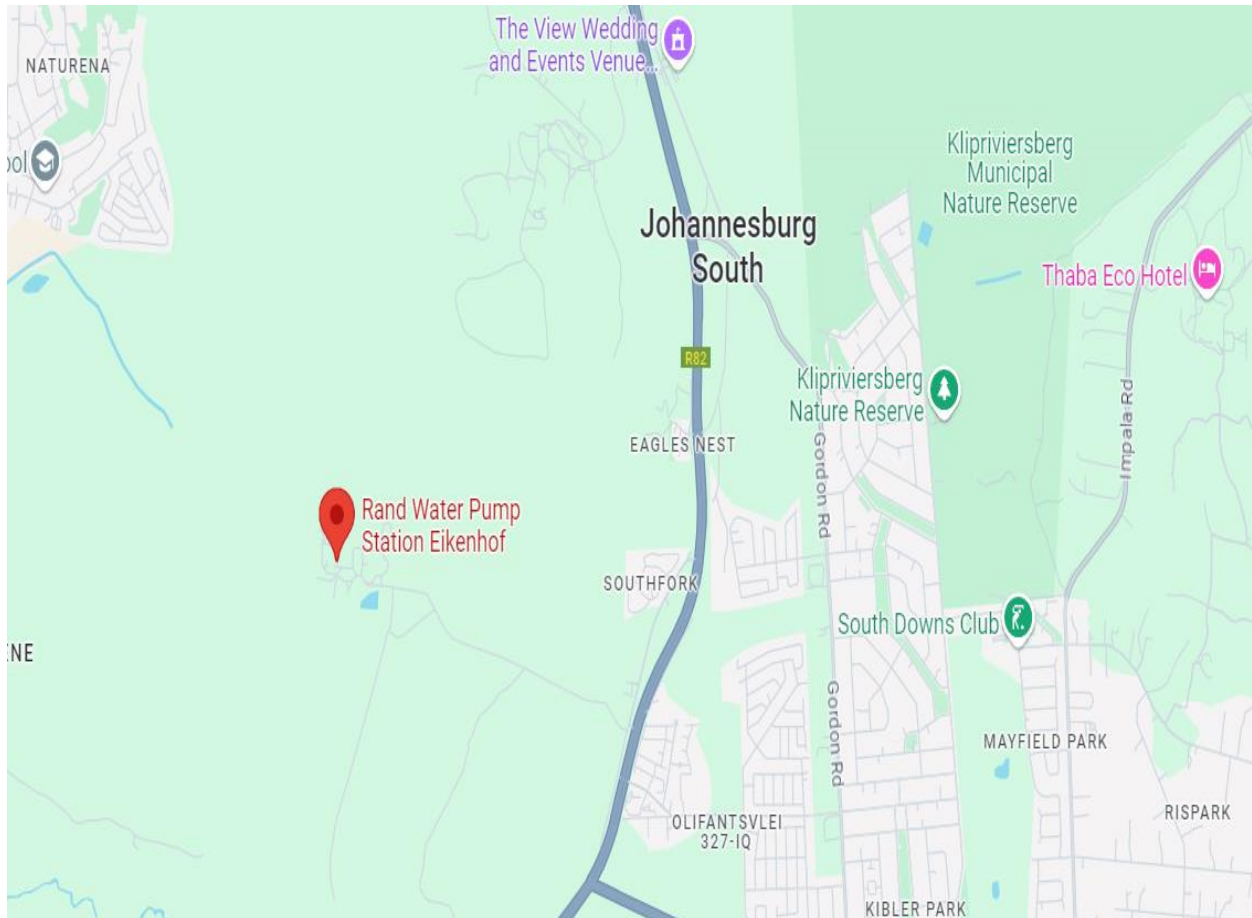
## 2. SITE LOCATION- Zwartkopjes Pumping station.

The Site of the work is situated GPS coordinates **-26.353316244049388, 28.061408834861762** not far from the **Mall of the South**.



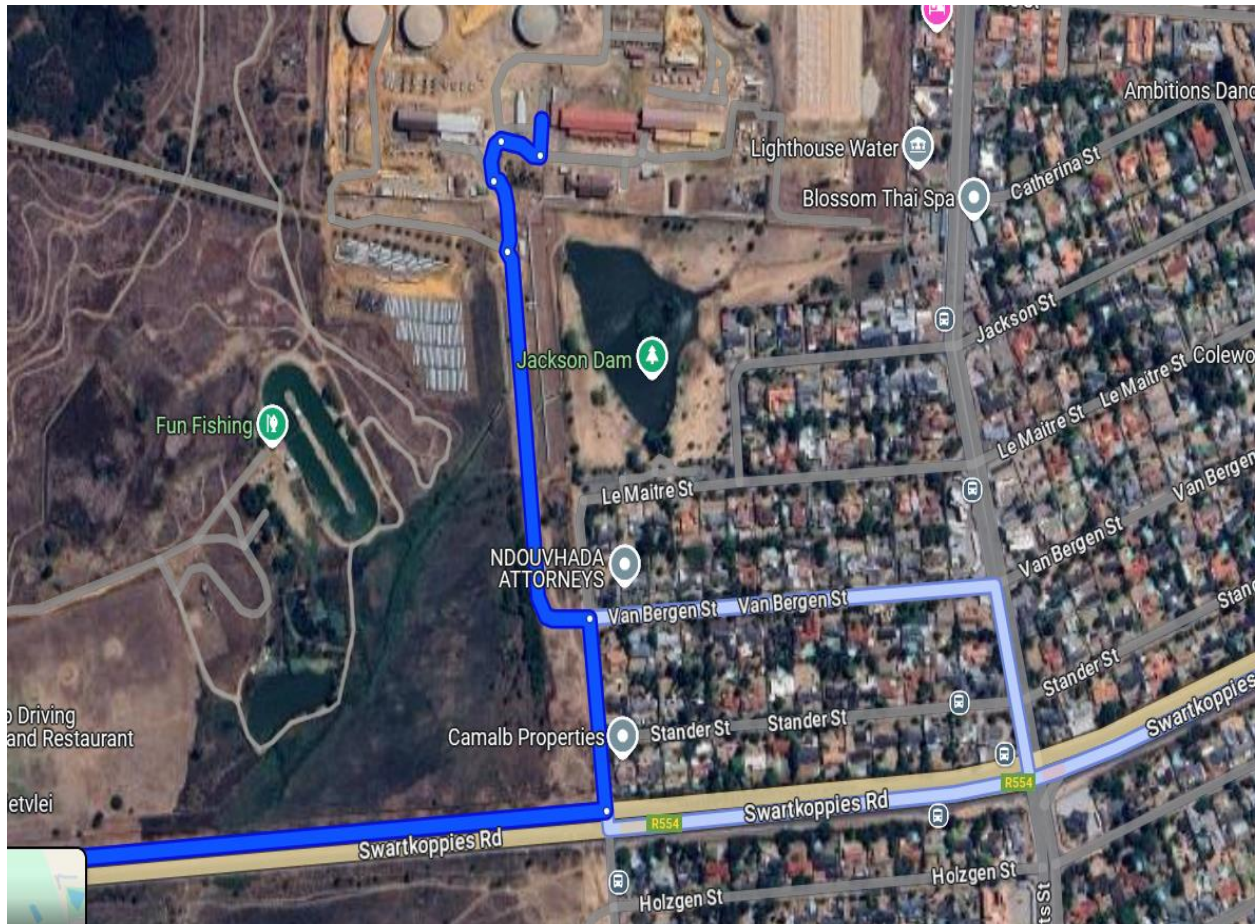
### 3. SITE LOCATION- Eikenhof Pumping station.

The Site of the work is situated GPS coordinates (-26.308665105288835) along **R82** freeway, on the west of the **Mall of the South**



#### 4. SITE LOCATION- Palmiet Pumping station.

The Site of the work is situated GPS coordinates (-26.305525063695637, 28.090309001999834) west of Mall of the south.



2. SAFETY. All people visiting the site during the briefing session shall wear safety shoes and ear protection.